

Ashford

4 Beds | 2 Baths | 1 Half Bath | 3,377 sq. ft.



Elevation A



Elevation B



Elevation D



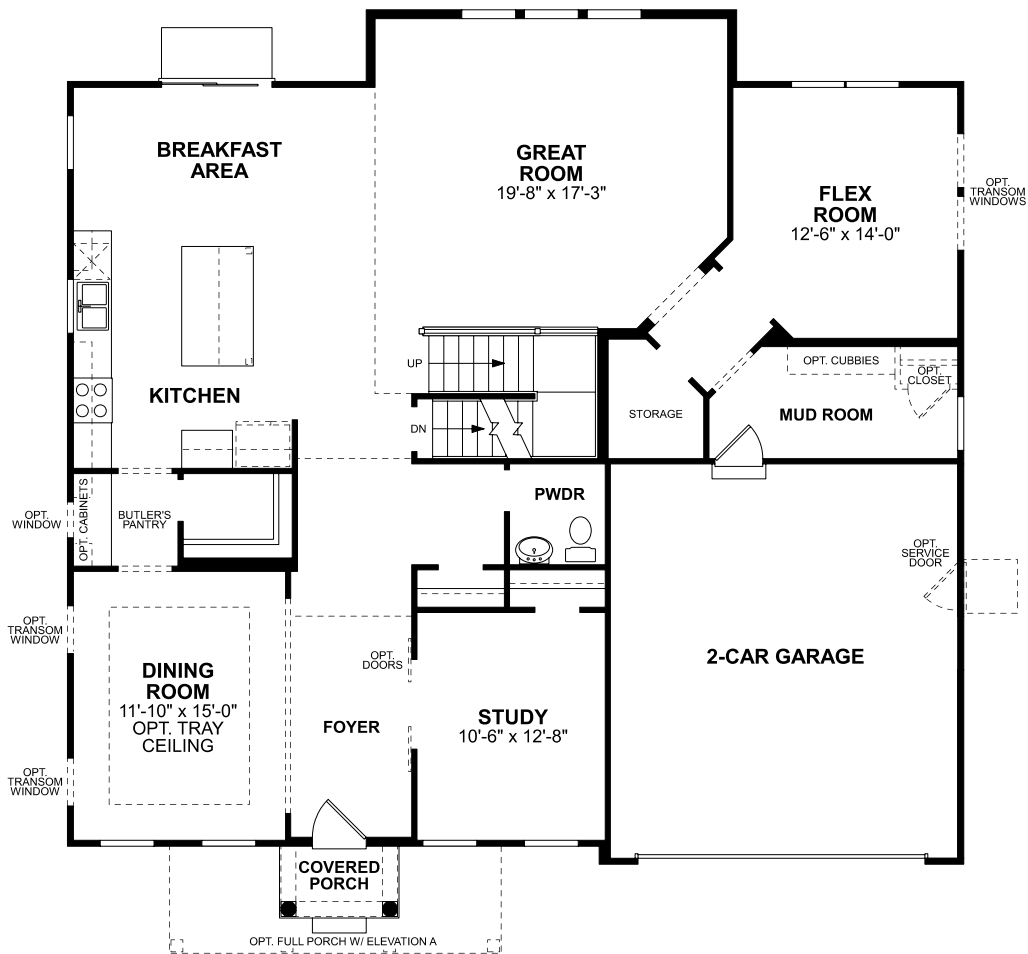
Elevation C



Ashford

4 Beds | 2 Baths | 1 Half Bath | 3,377 sq. ft.

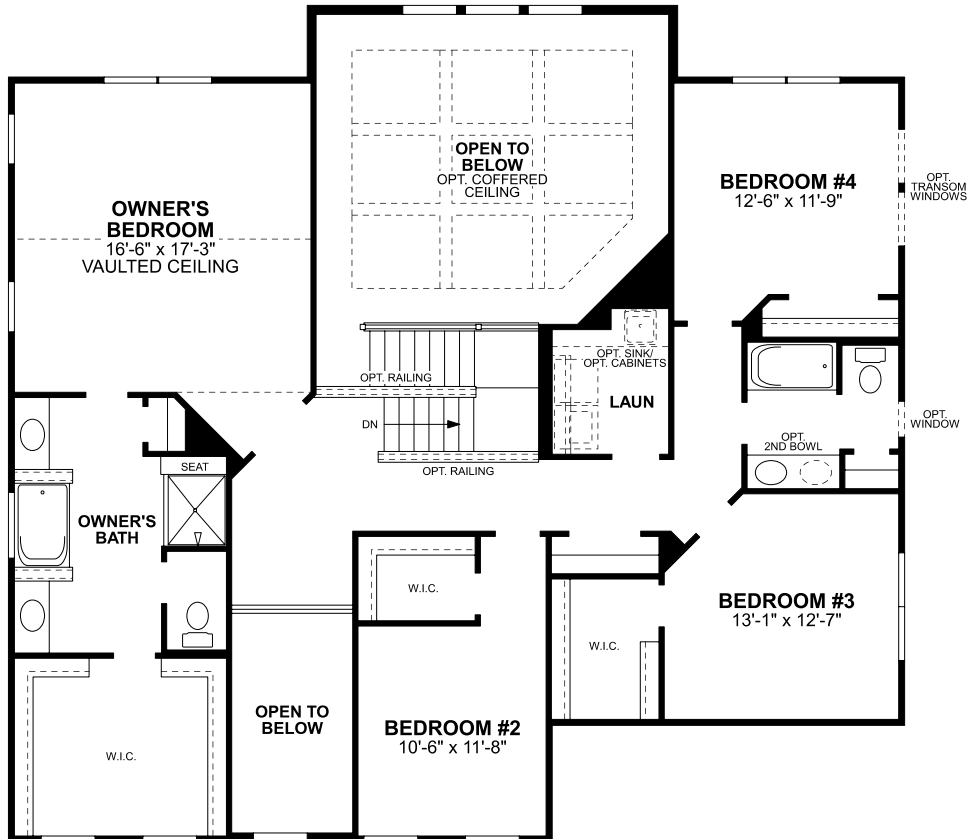
First Floor



Ashford

4 Beds | 2 Baths | 1 Half Bath | 3,377 sq. ft.

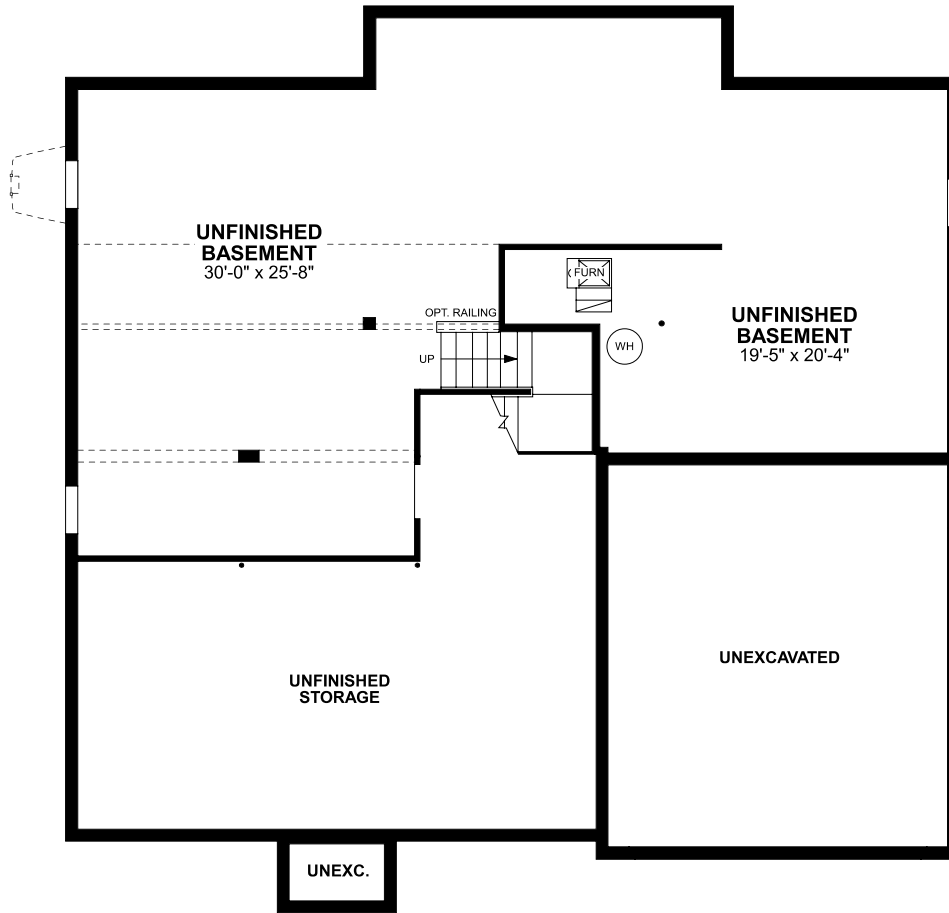
Second Floor



Ashford

4 Beds | 2 Baths | 1 Half Bath | 3,377 sq. ft.

Basement



Because we are constantly improving our product, we reserve the right to revise, change, and/or substitute product features, dimensions, specifications, architectural details, and designs without notice. In addition, options shown may not be available in all communities. This brochure is for illustration purposes only and is not part of a legal contract. Prices are subject to change without notice. Room dimensions are approximate and calculated from inside of partition. Please see a New Home Consultant for details. Printed 07-21. Revision: 9/4/2020



M/I HOMES

Ashford

4 Beds | 2 Baths | 1 Half Bath | 3,377 sq. ft.

Available options for this floorplan:

Elevation B, Elevation C, Elevation D, Elevation E, Elevation F, Elevation G, Corner Fireplace, Rear Fireplace, Side Fireplace, Breakfast Bay, Dining Room Bay, Laundry, Pet Center, Alternate Kitchen Island, Guest Suite, Morning Room, Sunroom, 4' Great Room Extension, Planning Center, Garage Storage, 2-Car Side Load Garage, 3-Car Garage, 3-Car Side Load Garage, Deluxe Owner's Bath, Luxury Shower, Shared Bath, Bedroom #2 Bath, Bonus Room, Finished Basement

