

Approximately 2439 sq ft



COASTAL CLASSIC
(WITH OPTIONAL BRICK & EXTENDED PORCH)



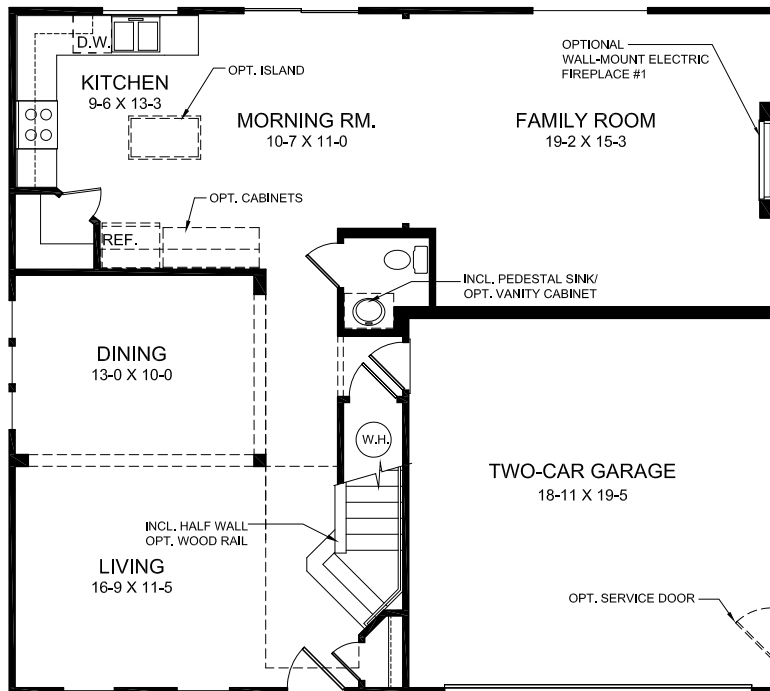
COASTAL CLASSIC



URBAN MODERN



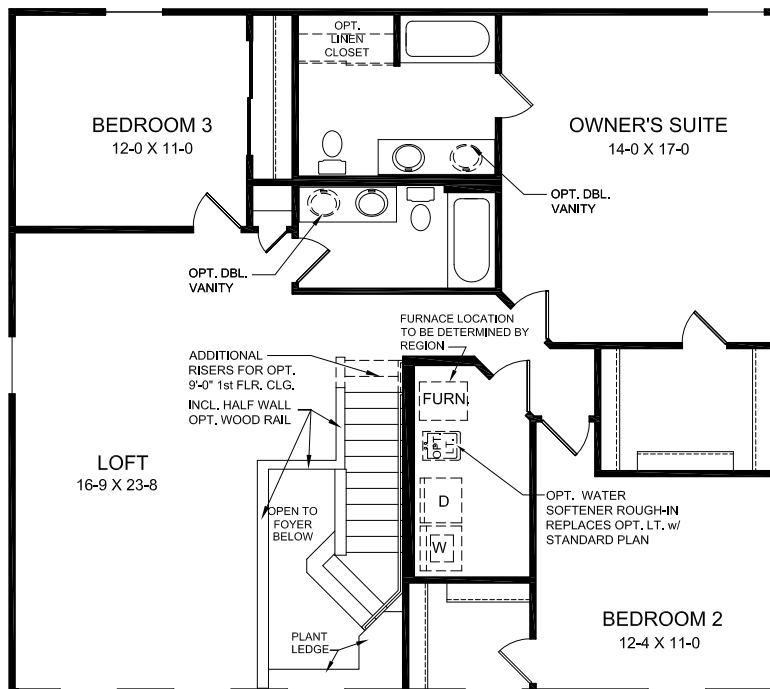
AMERICAN CLASSIC
(WITH OPTIONAL BRICK & PORCH)



FIRST FLOOR DESIGN

FIRST FLOOR FEATURES

- Optional Window and Door Configuration in Morning Room in Lieu of Sliding Glass Door
- Optional Bay Window in Morning Room
- Optional Window Configuration in Family Room in Lieu of Sliding Glass Window
- Optional Study
- Optional First Floor Guest Suite
- Large Pantry in Kitchen
- Optional Kitchen Island
- Optional Electric Fireplace
- Optional 4 ft x 16 ft Garage Expansion
- Two Car Garage



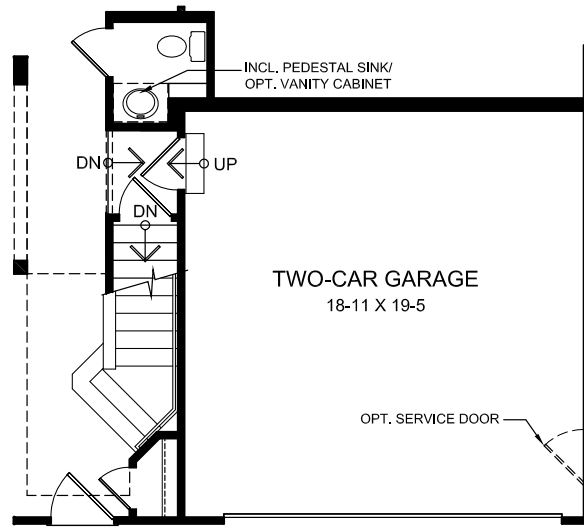
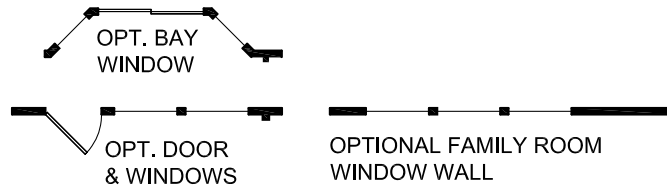
SECOND FLOOR DESIGN

SECOND FLOOR FEATURES

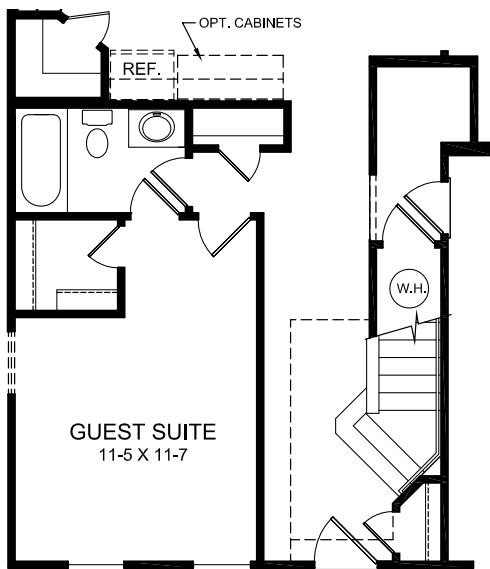
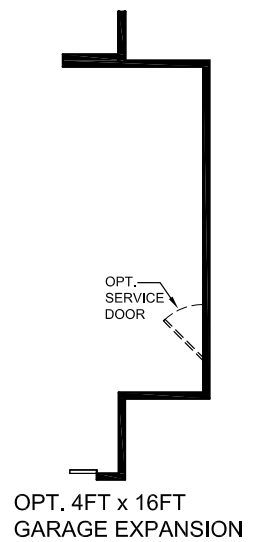
- Three Bedrooms with Loft
- Optional 4th with Loft
- Owner's Suite Includes Private Bath and Walk-In Closet
- Optional Linen Closet in Owner's Bath
- Optional Owner's Bath with Separate Tub and Shower
- 2nd Floor Laundry Room with Optional Laundry Tray

OPTIONAL BASEMENT DESIGN

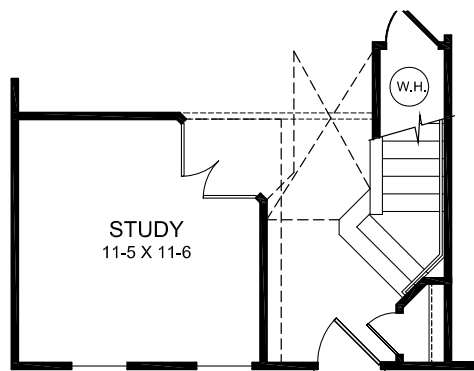
- Optional Full Bath Rough In



PARTIAL FIRST FLOOR DESIGN
w/ OPTIONAL BASEMENT

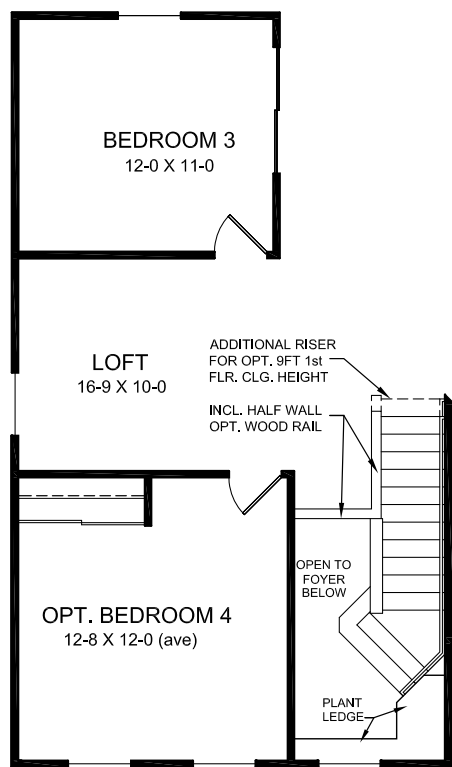
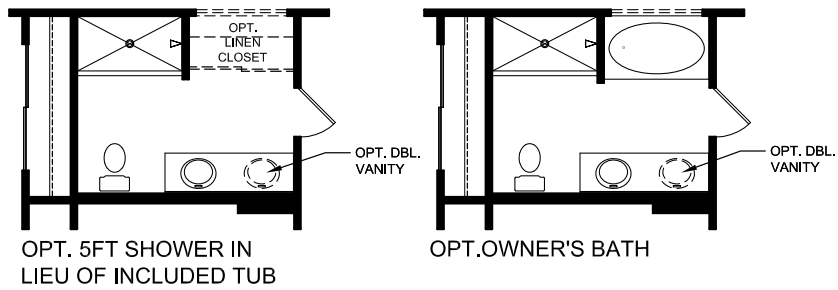


OPTIONAL GUEST SUITE
IN LIEU OF LIVING/DINING



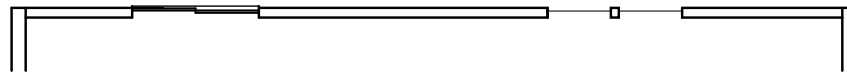
PARTIAL FIRST FLOOR DESIGN
w/ OPTIONAL STUDY
w/ OPTIONAL BASEMENT

FIRST FLOOR DESIGN OPTIONS

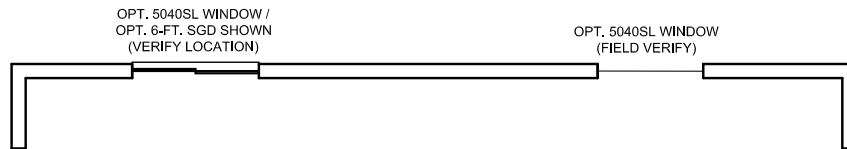


PARTIAL SECOND FLOOR DESIGN
W/ OPT. BEDROOM 4 AND LOFT

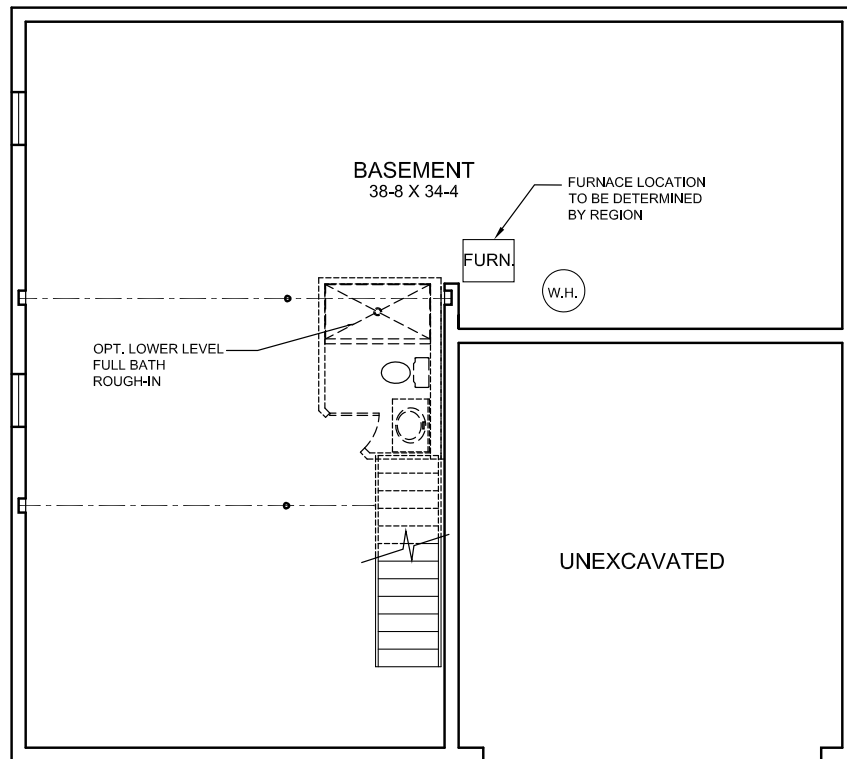
SECOND FLOOR DESIGN OPTIONS



OPTIONAL WALKOUT BASEMENT
w/ REAR FRAME WALL
w/ INCL. SLIDING GLASS DOOR & (2) 3052SH WINDOWS



OPTIONAL BASEMENT DESIGN
w/ OPT. SLIDING GLASS DOOR



OPTIONAL BASEMENT DESIGN

BASEMENT DESIGN