

Approximately 2794 sq ft



**MODERN FARMHOUSE**



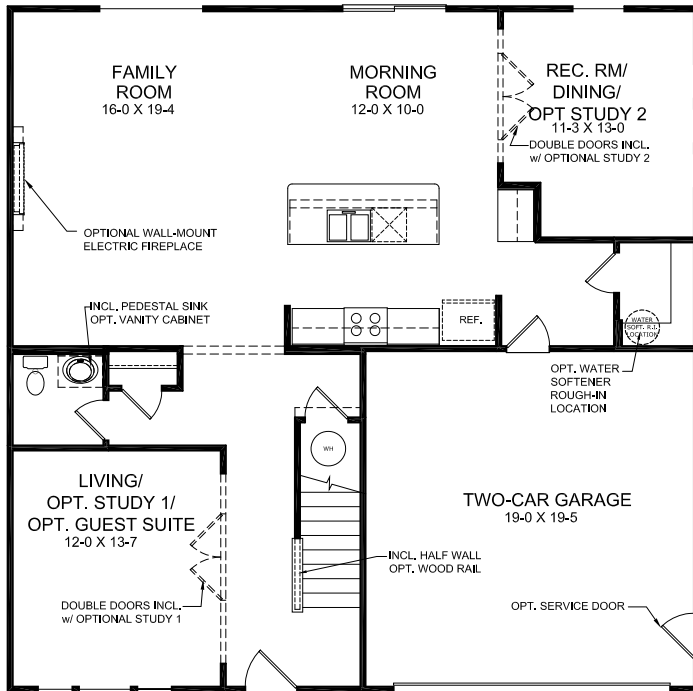
**AMERICAN CLASSIC**  
(WITH OPTIONAL BRICK & PORCH)



**COASTAL CLASSIC**



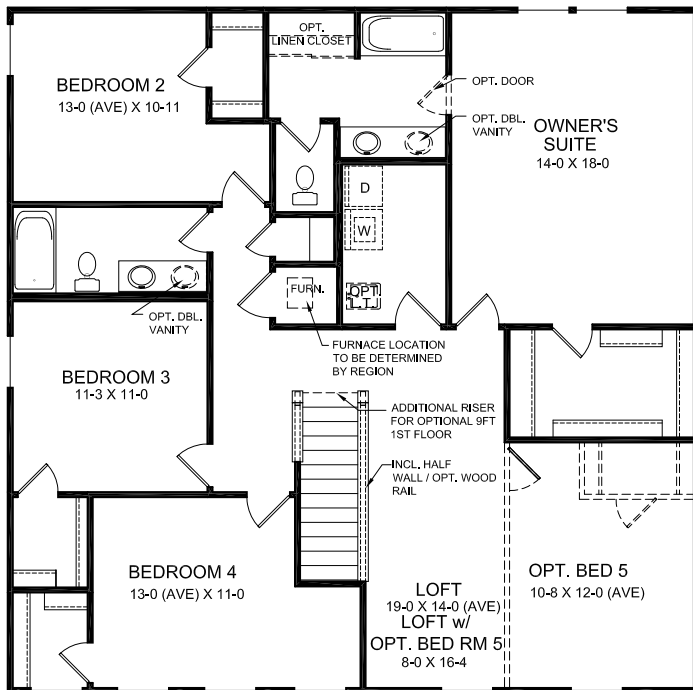
**MODERN FARMHOUSE**  
(WITH OPTIONAL BRICK)



FIRST FLOOR DESIGN

**FIRST FLOOR FEATURES**

- Optional Door and Window Configuration in Morning Room
- Optional 2-ft. Morning Room Expansion
- Optional Window Configuration in Family Room
- Open Kitchen Design
- Formal Living Room
- Optional Study
- Optional Guest Suite in Lieu of Living Room
- Included Rec. Room
- Optional Dining Room
- Optional Study #2
- Optional Electric Fireplace
- Optional 4 ft X 16 ft garage expansion
- Two-Car Garage



SECOND FLOOR DESIGN

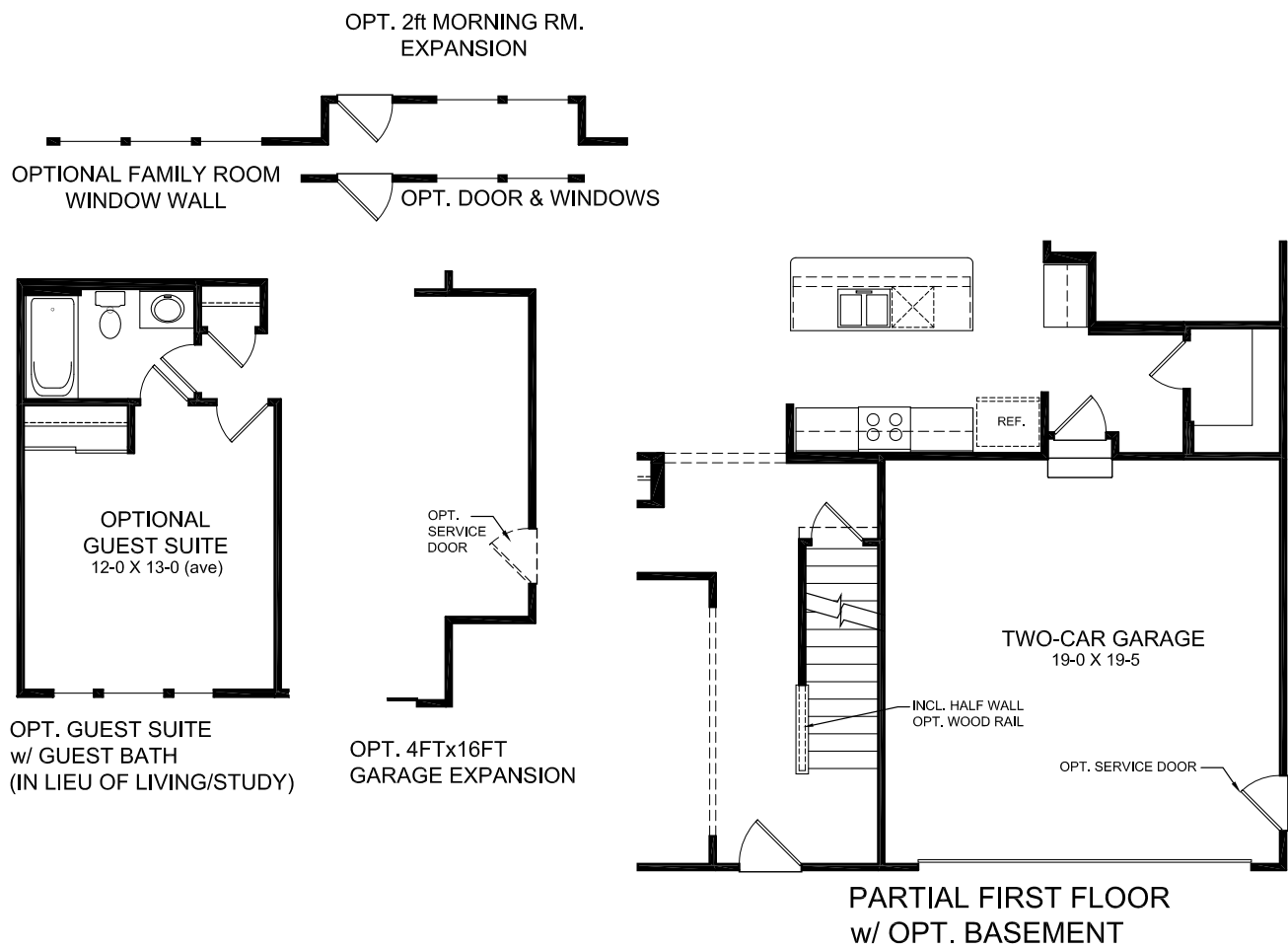
**SECOND FLOOR FEATURES**

- Optional 5th Bedroom with Loft
- Optional Full Bath with Opt. Bedroom 5
- Second Floor Laundry Room
- Optional 5 ft Shower in Lieu of Tub in Owner's Suite
- Optional Owner's Bath with Tub and separate 5 ft Shower

**OPTIONAL BASEMENT DESIGN**

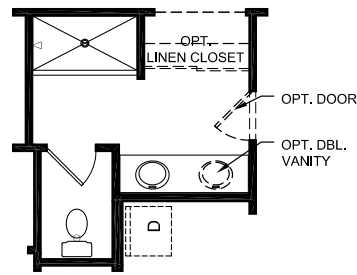
- Optional Full Bath Rough In



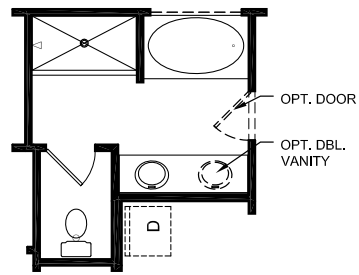


## FIRST FLOOR DESIGN OPTIONS

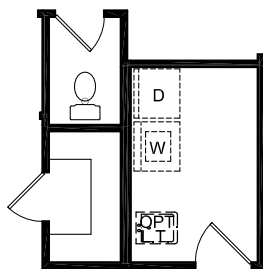




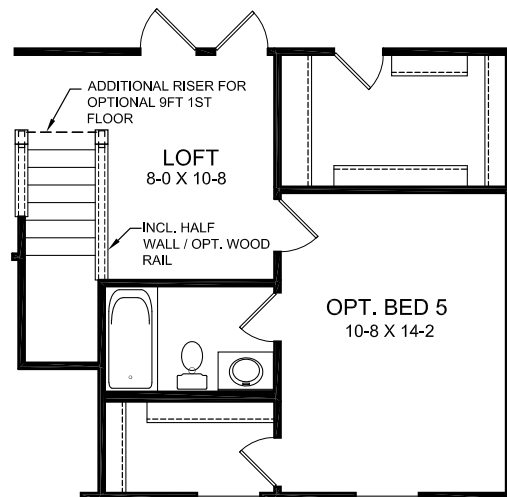
OPT. 5FT SHOWER  
IN LIEU OF INCLUDED OF TUB



OPT. OWNER'S BATH

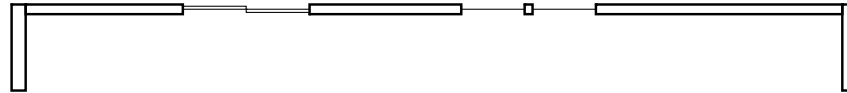


PARTIAL SECOND FLOOR DESIGN  
w/ OPT. BASEMENT

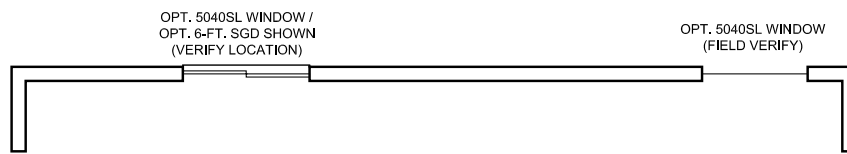


OPT. BEDROOM 5 BATH  
ONLY AVAILABLE w/ OPT. 5TH BEDROOM

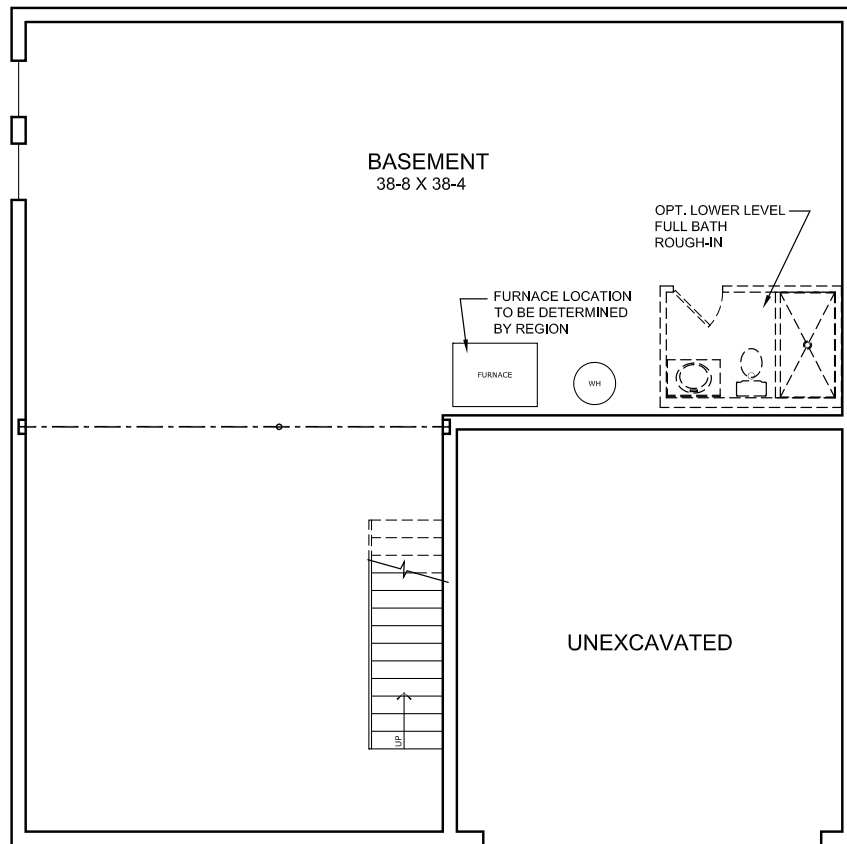
## SECOND FLOOR DESIGN OPTIONS



OPTIONAL WALKOUT BASEMENT  
w/ REAR FRAME WALL  
w/ INCL. SLIDING GLASS DOOR & (2) 3052SH WINDOWS



OPTIONAL BASEMENT DESIGN



## BASEMENT DESIGN

