

Approximately 1842 sq ft



URBAN MODERN
(WITH OPTIONAL BRICK)



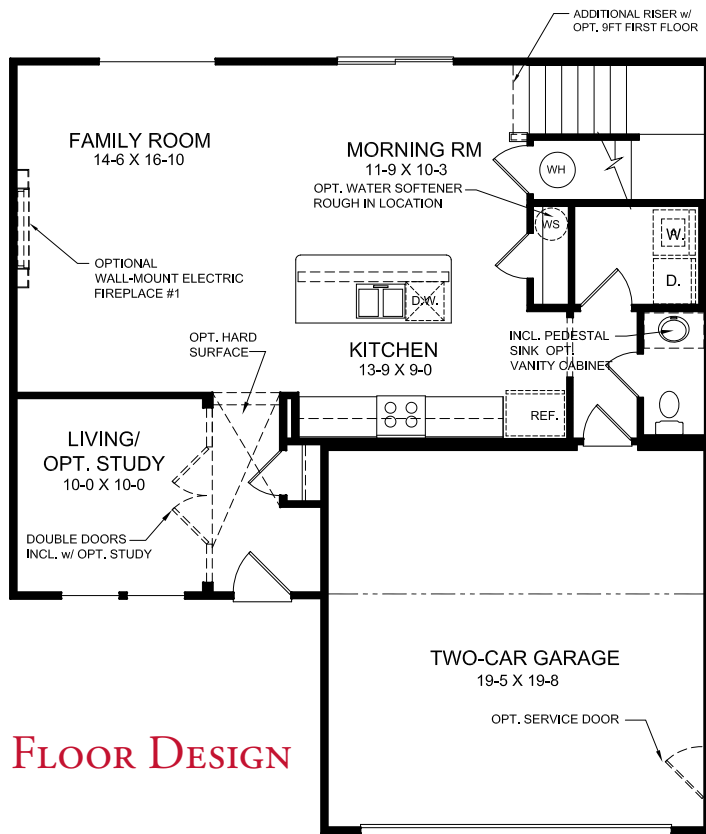
WESTERN CRAFTSMAN
(WITH OPTIONAL BRICK)



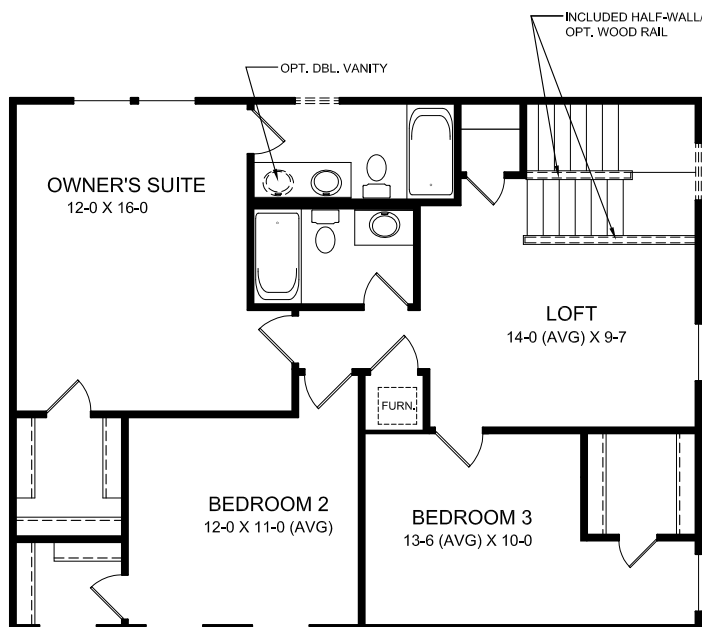
MODERN FARMHOUSE



WESTERN CRAFTSMAN
(WITH OPTIONAL PORCH)



FIRST FLOOR DESIGN



SECOND FLOOR DESIGN

FIRST FLOOR FEATURES

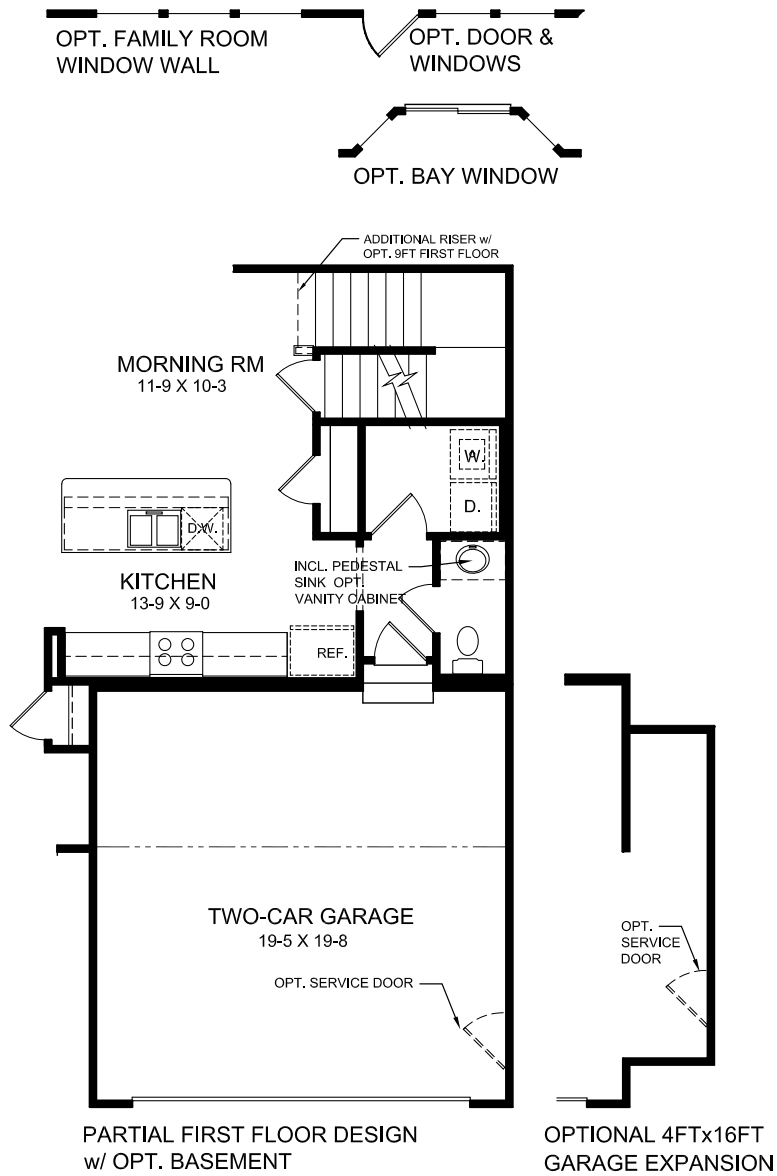
- Optional Window and Door Configuration in Morning Room in lieu of Sliding Glass Door
- Optional Bay Window in Morning Room
- Optional Window Configuration in Family Room
- Formal Living Room
- Optional Study
- Optional Electric Fireplace
- Optional 4 ft x 16 ft Garage Expansion
- Two Car Garage

SECOND FLOOR FEATURES

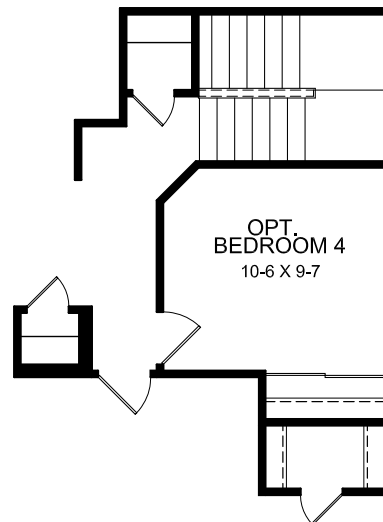
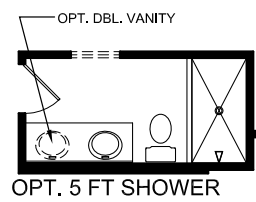
- 3 Bedrooms with Loft
- Optional 4th Bedroom
- Optional Window in Owner's Bath
- Optional 5 ft Shower in Lieu of Tub in Owner's Suite

OPTIONAL BASEMENT DESIGN

- Optional Full Bath Rough In

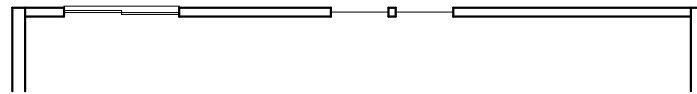


FIRST FLOOR DESIGN OPTIONS

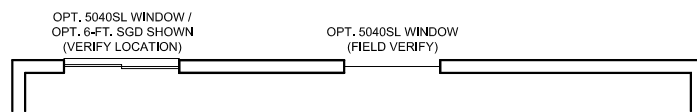


OPTIONAL BEDROOM 4
IN LIEU OF LOFT
(SHOWN w/ OPT. BASEMENT)

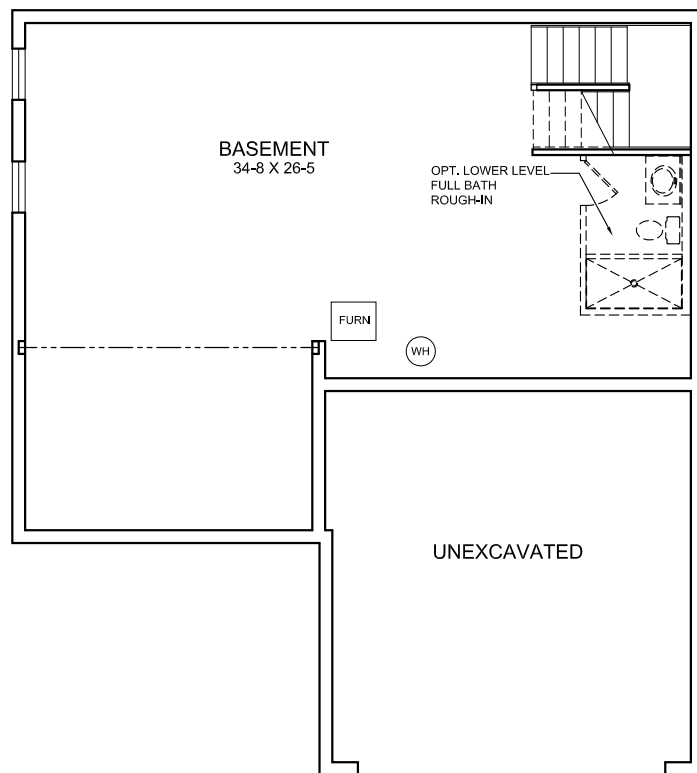
SECOND FLOOR DESIGN OPTIONS



OPTIONAL WALKOUT BASEMENT
w/ REAR FRAME WALL
w/ INCL. SLIDING GLASS DOOR & (2) 3052SH WINDOWS



OPTIONAL BASEMENT DESIGN



OPTIONAL BASEMENT DESIGN

BASEMENT DESIGN

